

Linha
STANDARD

Macler*



Nonylphenol

6,0 EO • 9,5 EO • 10 EO

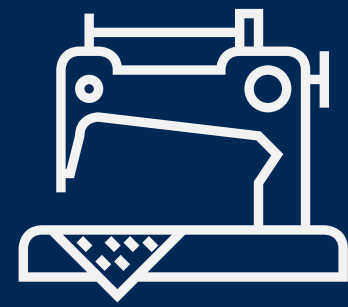
Non-ionic surfactant





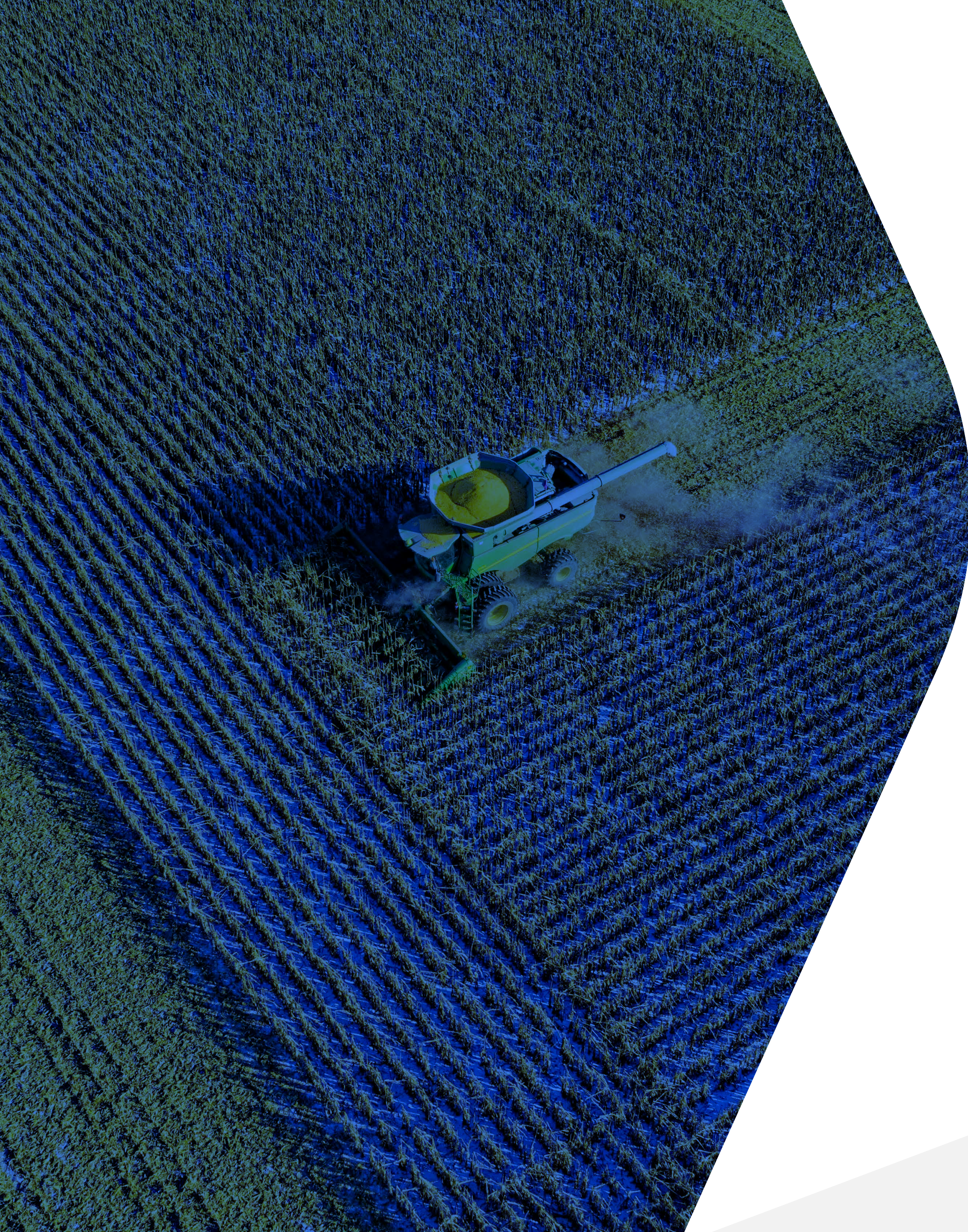
Hygiene
and cleaning

Active ingredient
Degreaser agent
Emulsifier



Textile
Detergent
Emulsifier





Agricultural

**Emulsifier
Dispersant**



Nonylphenol 6,0EO

Dispersible (it does not
dissolves in water)

Nonylphenol 9,5EO

Soluble

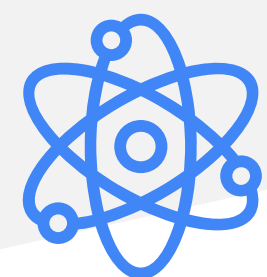
Nonylphenol 10EO

Soluble



 **Contraindications
and situations to avoid**

Incompatible with sodium hypochlorite.



Physical-chemical specifications

Parameters

Nonil Fenol 6,0 EO

Physical State

Liquid

Color

Colorless to yellowish

Water (%)

Max. 0,2

Acidity (mg KOH/g)

Max. 1,0

Viscosity, 25°C, RVT, sp3, 100 rpm (cP)

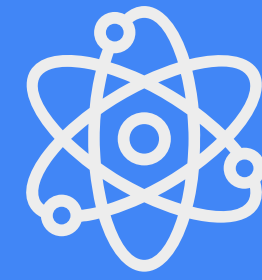
210 - 340

Density (g/cm³)

1,035 - 1,045

ph, 1%, aqueous, 25°C (w/w)

5,5 - 7,5



Physical-chemical specifications

Parameters

Nonylphenol 9,5 EO

Physical State, 25°C

Liquid

Color

Colorless to yellowish

Active Matter (%)

Min. 99

Total Acid Number (mg KOH/g)

87 - 95

Water (%)

Max. 0,5

Cloud Point, sol 1% aqueous (°C)

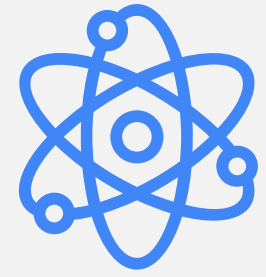
51 - 56

Density (g/cm³)

1,055 - 1,065

ph 1% aqueous, 25°C (w/w)

5,0 - 7,5



Physical-chemical specifications

Parameters

Nonylphenol 10 EO

Physical State, 25°C

Liquid

Color

Colorless to yellowish

Water (% w/w)

Max. 0,5

Cloud Point, sol 1% aqueous (°C)

56 - 66

Viscosity, 25°C (cP)

250 - 350

Density, 25°C (g/cm³)

1,055 - 1,065

pH 1% aqueous, 25°C (w/w)

5,0 - 8,0

Homologation

Contact our sales team and request a sample for testing and homologation!

TrustScan®

All of our Standard products go through **TrustScan!**

A **methodology** that ensures the quality of the product at the time of application. We believe that a product with the **correct concentration** is the minimum we must provide.

TrustScan is more than an anti-fraud seal!



Due to the fact that it is one of the most traditional surfactants and has a low price, it is often adopted in cases where its performance does **not present** a cost-benefit ratio. After all, a low price does not always indicate a low cost in the application inside the formula.



To find out if you are using this product in the most cost-effective way and discover other solutions focused on **cost-benefit**, count on our Smart**Lab**!



SmartLab is a research and development department entirely dedicated to our active customers.



Live the **experience** of having a **strategic** partner at your service. Count on Smart**Lab**!

Contact our sales team. We will offer all our **know-how** to your product. If you have any questions, please contact our Smart**Lab**.

Macler*

Our chemistry
in **harmony**
with your routine.

Macler Produtos Químicos Ltda

Rua Fritz Lorenz . 1774 . G5 . Bairro Industrial
CEP 89.120-000 . Timbó . Santa Catarina

suporte1@macler.com

47 3323.5012

macler.com.br